



Ex



智能防爆安全帽

Intelligent Explosion-proof safety helmet



中油防爆电气(安徽)有限公司
ZHONG YOU EXPLOSION PROOF ELECTRICAL(ANHUI) CO.,LTD.



CNSH-M1(4G)

系列智能防爆安全帽

CNSH-M1(4G)

Series intelligent Explosion-proof safety helmet



G 全新定义智能安全帽 New definition of smart helmet

- ◆ 12 大智慧功能一体化
- ◆ 12 Great wisdom function integration



音视频通话
Audio and video call



高清摄影
High definition photography



电子围栏
Electronic fence



移动轨迹
Moving trajectory



人员定位
Personnel location



SOS 紧急呼叫
SOS Emergency call



静默报警
Silent alarm



脱帽报警
Hat off alarm



跌落报警
Drop alarm



免费后台
Free background



生命体征
(选配)
Vital sign
(optional)



AI智能
(选配)
AI intelligence
(optional)

G 产品参数 Product parameter

颜色 Colour	白色, 红色, 蓝色, 黄色 White, Red, Blue, Yellow
材质 Material	ABS 材质 ABS Material
重量 Weight	650g
尺寸 Chi cun	294mm×228.5mm×153.5mm (长×宽×高) 《满足GB/T2811-2019 标准设计》 294mm×228.5mm×153.5mm (L × W × H) "Meet GB/T2811-2019 standard design"
通信频段 Communication frequency band	LTE-FDD 频段 B34/B38/B39/B40/B41, LTE-TDD 频段 B1/B2/B3/B5/B7/B8, WCDMA 频段 2100Mhz, TD-SCDMA 频段 B34/B39, GSM 频段 850/900/1800/ 1900MHz LTE-FDD band B34/B38/B39/B40/B41, LTE-TDD band B1/B2/B3/B5/B7/B8, WCDMA band 2100Mhz, TD-SCDMA band B34/B39, The GSM band is 850/900/1800/ 1900MHz
定位 Positioning	标配: GPS、北斗定位 选配: RTK、UWB Standard: GPS, Beidou positioning optional: RTK, UWB
WIFI	支持(IEEE802.1a/b/g/n) Support(IEEE802.1a/b/g/n)
工作温度 Operating temperature	-30°C~50°C
工作湿度 Working humidity	10%~60%
IP等级 IP Level	IP66
Bluetooth	支持 BT: 5.0 Support BT: 5.0 1、安全帽可以连接蓝牙耳机, 耳机可播出语音播报内容, 可接听语音通话。选定(挂脖式、入耳式、挂耳式)耳机适配。 2、安全帽的蓝牙连接可扫描蓝牙信标进行定位。支持信标围栏报警、帽子本地报警。 1、the helmet can be connected to the Bluetooth headset, the headset can broadcast voice broadcast content, can answer voice calls. Select (neck type, in-ear type, hanging ear type) headset adaptation. 2、The Bluetooth connection of the helmet can scan the Bluetooth beacon for positioning. Support beacon fence alarm, cap local alarm.
天线 Ceiling	标配: 1个主天线+1个LTE分集天线+1个(WIF-I&BT)天线(二合一)+GPS 陶瓷天线1个+近电天线1条 选配: 螺旋天线 Standard configuration: 1 main antenna + 1 LTE diversity antenna + 1 (WIF-I&BT) antenna (2-in-1) + 1 GPS ceramic antenna + 1 near-current antenna. Optional: helical antenna
电池规格 Battery specification	标配: 电池, 容量5000mAh 其他: 可拆卸、电池单体可充电(充电指示灯) Standard: Battery, capacity 5000mAh Other: Removable, battery cell rechargeable (charging indicator)



G 产品参数 Product parameter

摄像头 Camera	2100W像素，支持1080P高清，后台默认监控分辨率 720P 有平视、俯视两个角度，激光灯，可辅助摄像头定位 2100W pixels, support 1080P HD, background default monitoring resolution 720P There are two angles, head up and down, Laser light to assist camera positioning
AI 智能语音 AI intelligent voice	通过语音进行紧急呼叫，通过语音控制开灯、关灯，通过语音控制拍照、录像，通过语音控制，进行主副卡切换、查询电量、开启/关闭警示灯、开启人脸识别等 Make emergency calls by voice, turn on and off the lights by voice control, take photos and video by voice control, switch the primary and secondary cards, query the power, turn on/off the warning light, turn on face recognition, etc
Type-C接口 Type-C interface	16PIN，支持充电，数据传输支持USB 2.0 16PIN, support charging, data transmission support USB 2.0
耳机接口(3.5mm) Headphone jack(3.5mm)	标配功能 1: 3.5MM 有线耳机 选配功能 2: 生命体征模块 备注: 以上功能，二选一 Standard function 1: 3.5mm wired headset optional function 2: Vital signs module note: the above functions, choose one of two
麦克风 Microphone	类型: 贴片式 配置: 主MIC 副 MIC(降噪) 语音 MIC Type: Chip type configuration: main MIC, sub-MIC (noise reduction), voice MIC
喇叭 Flop	类型: BOX 喇叭 功率: 8欧@1瓦 配置: 双喇叭 Type: BOX horn Power: 8Ohm @ 1W Configuration: dual horn
LED 头灯 LED Headlight	功率: 最大支持 1W 配置: 档位可调，1档 0.5W, 2 档1W 其他: 默认 1档 Power: Maximum support 1W Configuration: gear adjustable, 1st 0.5W, 2nd 1W Other: default 1
防跌落 Fall prevention	2米处跌落不造成功能失效 Drop at 2 meters does not cause functional failure
指示灯 Pilot lamp	开机: 蓝灯快闪 工作: 蓝灯慢闪 充电中: 红灯常亮 充满电: 绿灯常亮 Power on: Blue light blinking fast working: blue light blinking slowly, charging: red light on fully charged: green light on

G 产品功能 Product function



音视频通话集群对讲
Audio and video call cluster intercom

- ◆ 连接WIFI或4G，后台管理员可看到记录仪拍摄的画面，还可以与前线执法人员双向语音对讲。
- ◆ Connect WIFI or 4G, background administrator can when I saw the footage from the recorder, it was okay to two-way voice contact with front-line law enforcement talk.



4G/5G 智能摄像安全帽
4G/5G Smart camera helmet

- ◆ 可视化查看一线作业软硬件灵活拓展远程指导调度平台级管理架构
- ◆ Visualize front-line jobs Flexible expansion of hardware and software Travel guide scheduling Platform level management architecture



4G/5G 全网通
4G/5G Full Netcom

- ◆ 支持移动，联通，电信;支持无线WIFI链接/手机热点链接；通过网络进行实时视频通话语音通话远程记录
- ◆ Support mobile, Unicom, telecom; Support wireless WIFI link/mobile hotspot link; Real-time video call over the network voice call remote recording



5000MAH

- ◆ 可拆卸大容量电池
- ◆ Removable large capacity battery



G 选配功能 Optional function


生命体征
Vital sign

- ◆ 通过手环，实时检测施工人员的心率和血氧饱和度
- ◆ Through the bracelet, the heart rate and blood oxygen saturation of the construction personnel are detected in real time


登高预警
Ascent warning

- ◆ 内置高度监测芯片实时感应离地高度作出相应的预警功能
- ◆ The built-in height monitoring chip senses the height of the ground in real time to make the corresponding early warning function


近电感应
Near induction

- ◆ 分别可检测220V、10KV、35KV、110KV、220KV，靠近一定的安全帽距离后安全帽会发出提示
- ◆ Respectively can detect 220V 10KV 35KV 110KV 220KV, close to a certain helmet distance after the helmet will issue a prompt


气体检测
Gas detection

- ◆ 可检测氧气，氢气，氨气等多种气体
- ◆ Can detect oxygen, hydrogen, ammonia and other gases


人脸识别
Face recognition

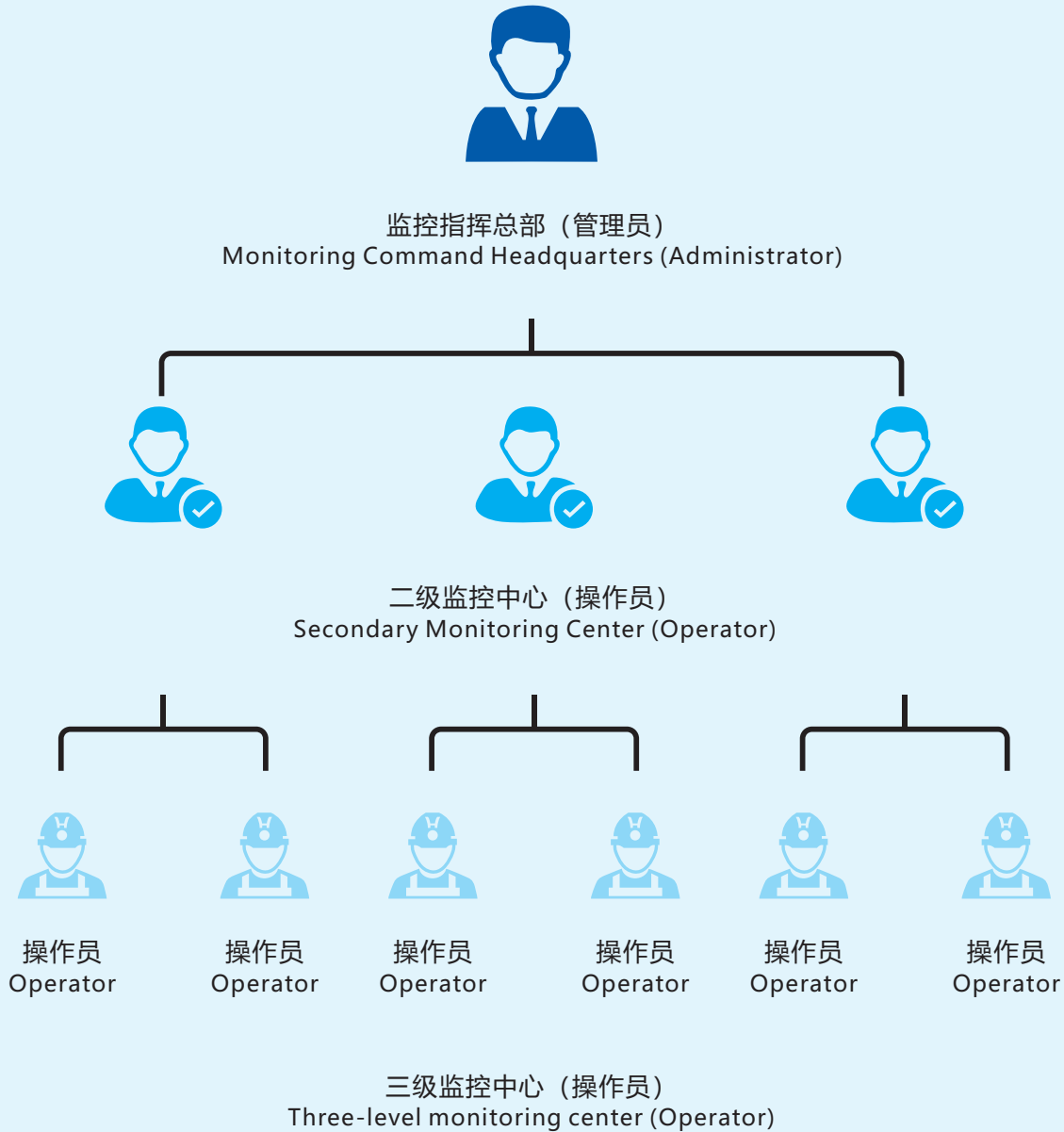
- ◆ 用摄像头采集含有人脸的图像或视频流，并自动在图像中检测和跟踪人脸，进而对检测到的人脸进行脸部识别
- ◆ The image or video stream containing the face is collected by the camera, and the face is automatically detected and tracked in the image, and then the detected face is recognized

多级管理权限，精准赋权 管理“上下”制

Multi-level management rights, accurate empowerment management "up and down" system

切实做到“一级管理一级，一级负责一级”，最高管理可合理化分配不同权限，不同责任给下属单位。即“管理到人，责任到人”。不让管理出漏洞。严格把控每个环节做好更加有效的工作。

Effectively achieve "one level of management, one level is responsible for one level", and the top management can rationalize the allocation of different authorities and different responsibilities to subordinate units. That is, "Management to people, responsibility to people". Do not let management loopholes. Strictly control each link to do more effective work.



C 后台管理 Back-end management



搭配可视化在线指挥调度平台

With visual online command dispatching platform

- ◆ 可对接内网，云存储独立账户二次加密为你的数据安全护航
- ◆ Can connect to the Intranet, cloud storage independent account secondary encryption for your data security escort



实时上传下达提高工作效率

Real-time upload to improve work efficiency

- ◆ 管理者通过手机管理版APP/电脑端发布要执行的作业任务，同时可选择多个作业人员共同执行，前方作业人员通过手机个人版APP接收任务并按照要求执行。
- ◆ The manager releases the task to be executed through the mobile phone management APP/Computer terminal, and can select multiple operators to perform it together. The front operators receive the task through the mobile phone personal version APP and execute it according to the requirements.



GPS+北斗双模定位

GPS+Beidou dual mode positioning

- ◆ 信号强、精度高，可实现人员实时定位电子围栏轨迹回放定位使用记录仪人员的实时位置
- ◆ Strong signal, high precision, can achieve personnel Real-time positioning electronic fence track playbackBit real-time location of the person using the recorder



实时危险报警提示 Real-time danger warning tips

- ◆ 安全帽集合SOS一键求救、近电、登高、跌倒、撞击、静默、脱帽报警等报警功能，确保施工人员工作的安全性和高效性。
- ◆ Safety helmet set SOS one button for help, near electricity, climbing, falling, impact, silence, hat off alarm and other alarm functions to ensure the safety and efficiency of construction workers.



实时视频监控 Real-time video surveillance

- ◆ 实时视频监控：作业人员佩戴智能安全帽，其内置的摄像头可实时采集作业现场的视频画面，并通过网络传输至后台视频指示中心。后台人员可通过该中心实时查看作业人员的工作环境、操作流程等情况，以便及时了解任务进展，进行远程监管和技术协助。
- ◆ Real-time video surveillance: Workers wear smart safety helmets, and the built-in cameras can collect video images of the work site in real time and transmit them to the background video indication center through the network. Back-end personnel can view the working environment, operation procedures and other conditions of the workers in real time through this center, so as to promptly understand the progress of the tasks and conduct remote supervision and technical assistance.

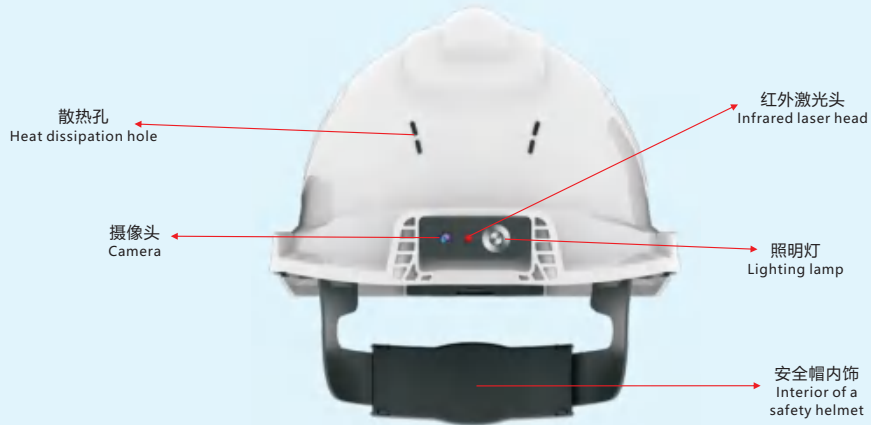


人员定位与轨迹跟踪 Real-time video surveillance

- ◆ 部分智能安全帽具备定位功能，后台视频指示中心可实时显示作业人员的位置信息，并记录其行动轨迹。通过设置电子围栏，还可实现区域超员 / 缺员预警、分权限越界预警等功能，全面保障作业安全。
- ◆ Some smart safety helmets are equipped with positioning functions. The background video indication center can display the real-time location information of the workers and record their movement trajectories. By setting up electronic fences, functions such as early warning for overstaffing or understaffing in the area and early warning for crossing boundaries by authority can also be realized, comprehensively ensuring the safety of operations.



C 产品外观图 Product appearance drawing



G 产品使用说明 Product Usage Instructions

名称 Name	图标 Icon	方法 Method	功能说明 Function Description
开/关机音量加/减 Turn on/off the volume up/down		——	开机默认自动录像且循环自动覆盖 It automatically records by default upon startup and automatically overwrites in a loop
		短按 Short press	短按音量加/减 Press the volume up or down button briefly
		长按 Long press	开关机键(3秒) Power on/off button(3 seconds)
对讲 Intercom		短按 Short press	长短按重置高度 Press the long and short buttons to reset the height
		长按 Long press	长按语音对讲 Long press the voice intercom
拍照按键 Photo button		短按 Short press	短按拍照 Short press to take a photo
		长按 Long press	长按开关闭录制 Long press to turn the recording on or off
求救 Help!		短按 Short press	开机状态下短按求救 Press briefly to call for help while the device is on
SIM 卡槽 SIM Card slot		——	按照图标缺口方向可以插入SIM卡、短按弹出SIM卡 You can insert the SIM card in the direction of the icon's notch or press it briefly to pop it out
USB 接口 USB Interface		——	在开机状态下，用数据线连接电脑可以进行数据移植及充电 When the computer is powered on, data transfer and charging can be carried out by connecting it to the computer with a data cable
		——	在关机状态下，用数据线连接可以充电 It can be charged when connected with a data cable in the off state
指示灯 Indicator light	○	蓝色 Blue	开机蓝灯快闪 The blue light flashes rapidly when the device is turned on
		蓝色 Blue	蓝灯慢闪 The blue light flashes slowly
		红灯常亮 The red light remains on constantly	充电中 Charging
		绿灯常亮 The green light is always on	充满电 Fully charged
尾部警示灯 Rear warning light	○	快闪 Flash	警示方式 Warning method
		AI 呼叫 AI Call	触发方式 Trigger method